



Air-Conditioners

PEA-RP100, 125, 140GAA

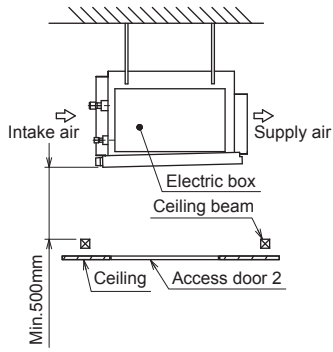
INSTALLATION MANUAL

FOR INSTALLER

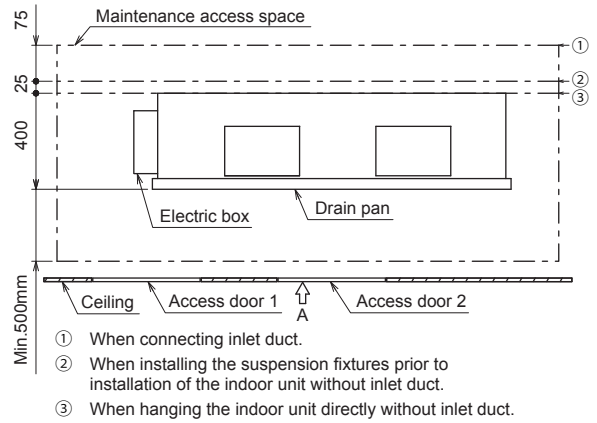
For safe and correct use, please read this installation manual thoroughly before installing the air-conditioner unit.

English

[Fig. 3-2-1]



[Fig. 3-2-2]

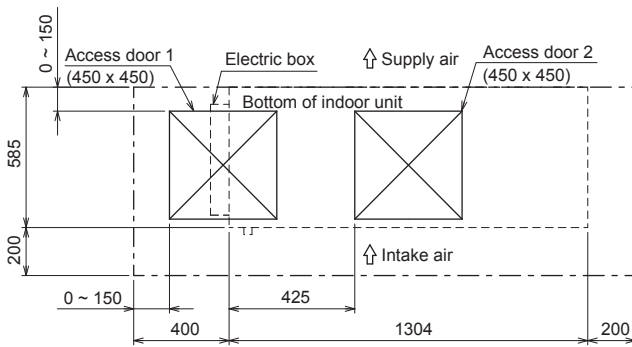


(Unit: mm)

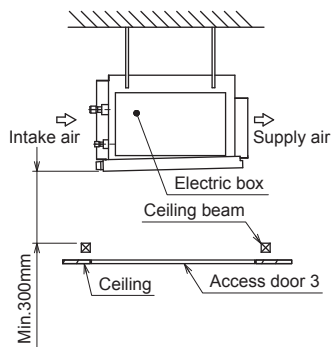
- ① When connecting inlet duct.
- ② When installing the suspension fixtures prior to installation of the indoor unit without inlet duct.
- ③ When hanging the indoor unit directly without inlet duct.

[Fig. 3-2-3]

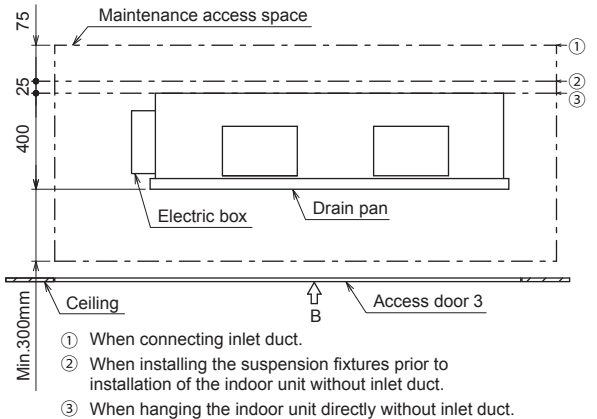
(Viewed from the direction of the arrow A)



[Fig. 3-2-4]



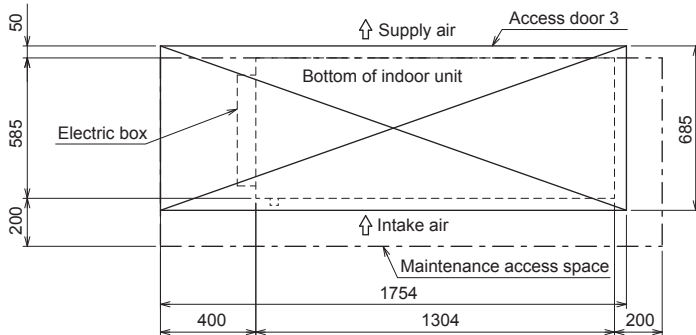
[Fig. 3-2-5]



- ① When connecting inlet duct.
- ② When installing the suspension fixtures prior to installation of the indoor unit without inlet duct.
- ③ When hanging the indoor unit directly without inlet duct.

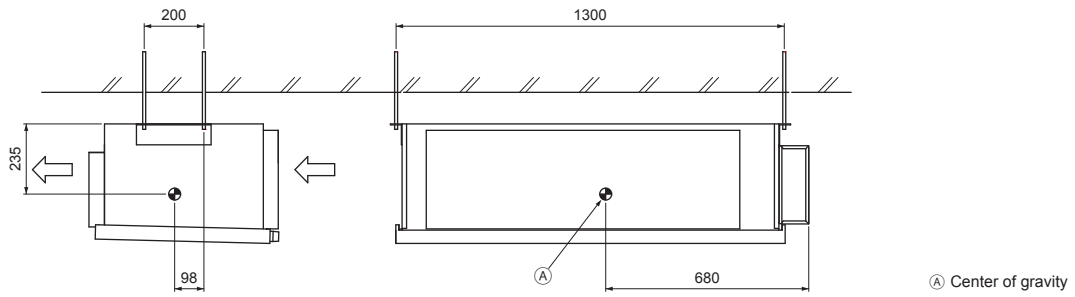
[Fig. 3-2-6]

(Viewed from the direction of the arrow B)

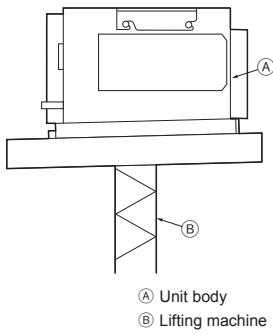


4**4.1**

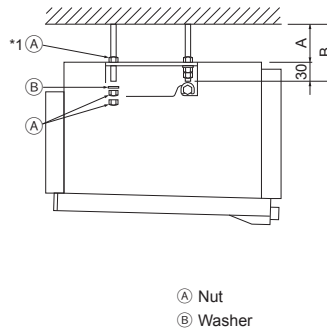
[Fig. 4-1]

**5****5.1**

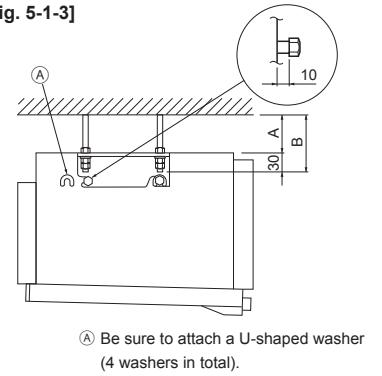
[Fig. 5-1-1]



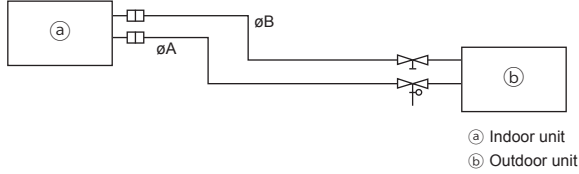
[Fig. 5-1-2]



[Fig. 5-1-3]

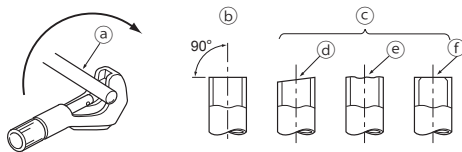
**6****6.1**

[Fig. 6-1]



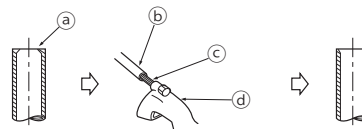
| Model | A | B |
|---------------------|---------------------|--------------------|
| PEA-RP100, 125, 140 | $\varnothing 15.88$ | $\varnothing 9.52$ |

[Fig. 6-2-1]



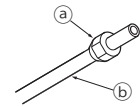
- a Copper tubes
- b Good
- c No good
- d Tilted
- e Uneven
- f Burred

[Fig. 6-2-2]



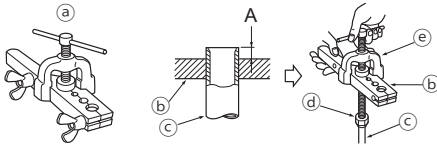
- a Burr
- b Copper tube/pipe
- c Spare reamer
- d Pipe cutter

[Fig. 6-2-3]



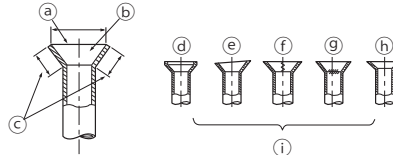
- a Flare nut
- b Copper tube

[Fig. 6-2-4]



- a Flaring tool
- b Die
- c Copper tube
- d Flare nut
- e Yoke

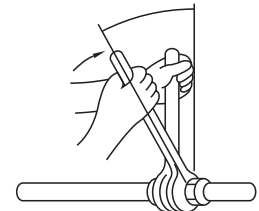
[Fig. 6-2-5]



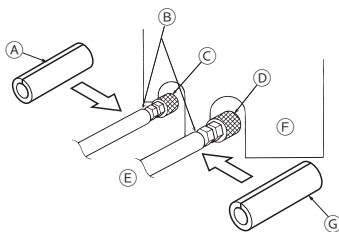
- a Smooth all around
- b Inside is shining without any scratches
- c Even length all around
- d Too much
- e Tilted
- f Scratch on flared plane
- g Cracked
- h Uneven
- i Bad examples

6.3

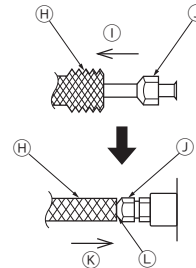
[Fig. 6-3-1]



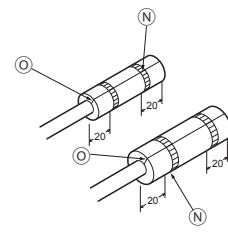
[Fig. 6-3-2]



- A Pipe cover (small) (accessory)
- B Caution:
Pull out the thermal insulation on the refrigerant piping at the site, insert the flare nut to flare the end, and replace the insulation in its original position.
Take care to ensure that condensation does not form on exposed copper piping.
- C Liquid end of refrigerant piping



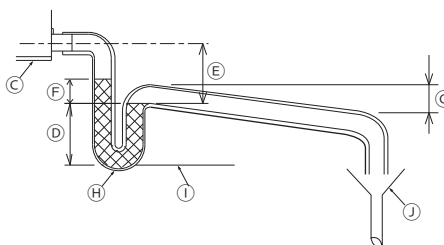
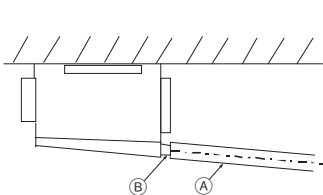
- D Gas end of refrigerant piping
- E Site refrigerant piping
- F Main body
- G Pipe cover (large) (accessory)
- H Thermal insulation (field supply)
- I Pull
- J Flare nut
- K Return to original position



- L Ensure that there is no gap here
- M Plate on main body
- N Band (accessory)
- O Ensure that there is no gap here. Place joint upwards.

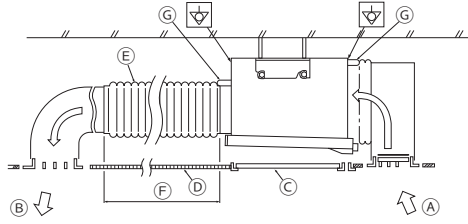
6.5

[Fig. 6-5]



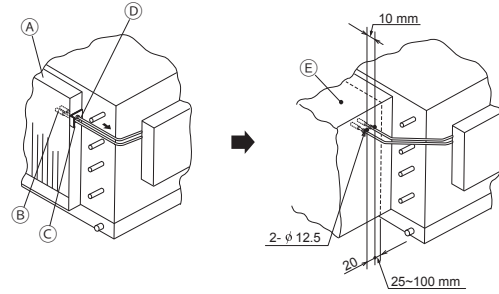
- A Insulator
- B Drain pipe R1
- C Drain pan
- D ≥ 70 mm
- E $\geq 2 \times F \geq 70$ mm
- F ≥ 35 mm
- G Downward slope 20 mm/m or more
- H Drain trap
- I The drain pipe should extend below this level.
- J Open drain

[Fig. 7-1-1]



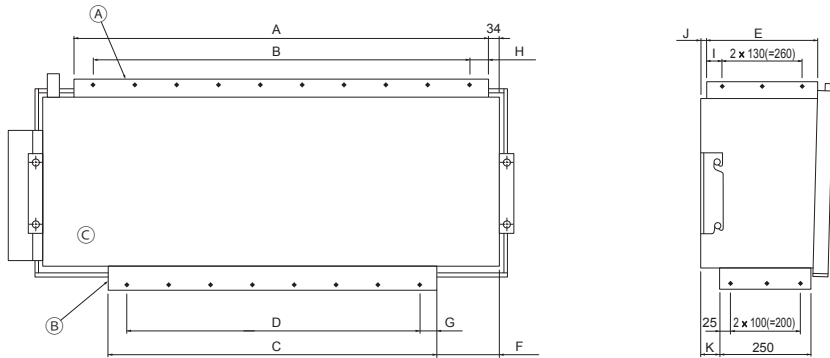
- Ⓐ Air inlet
- Ⓑ Air outlet
- Ⓒ Access door
- Ⓓ Ceiling surface
- Ⓔ Canvas duct
- Ⓕ Keep duct-work length 850 or more
- Ⓖ Connect common reference potential wire between duct-work to air conditioner

[Fig. 7-1-2]



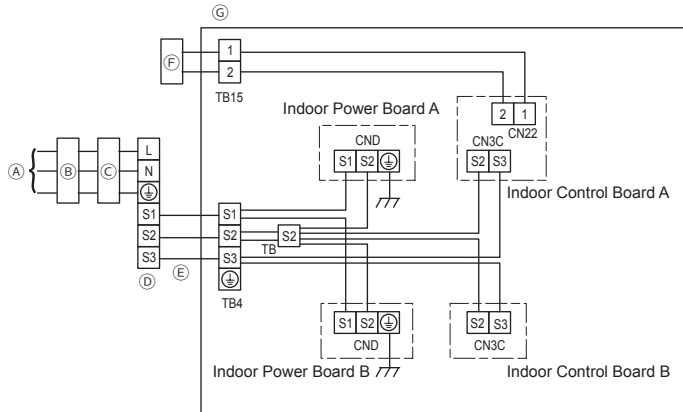
- Ⓐ Inlet duct flange
- Ⓑ Return air temperature sensor
- Ⓒ Sensor protection plate
- Ⓓ Inlet duct
- Ⓔ Sensor fixture

[Fig. 7-1-3]



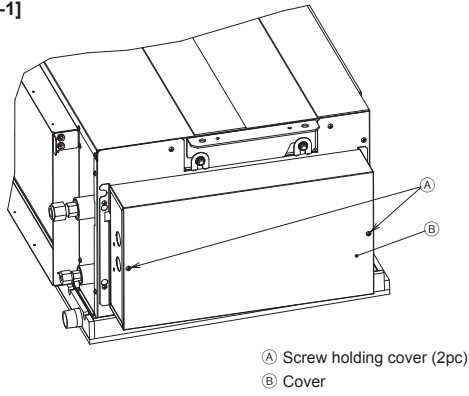
| Model | A | B | C | D | E | F | G | H | I | J | K |
|---------------------|------|-----------------|------|----------------|-----|-----|----|----|----|----|----|
| PEA-RP100, 125, 140 | 1102 | 8 x 130 (=1040) | 1000 | 7 x 130 (=910) | 330 | 105 | 45 | 31 | 35 | 22 | 95 |

[Fig. 8-1]



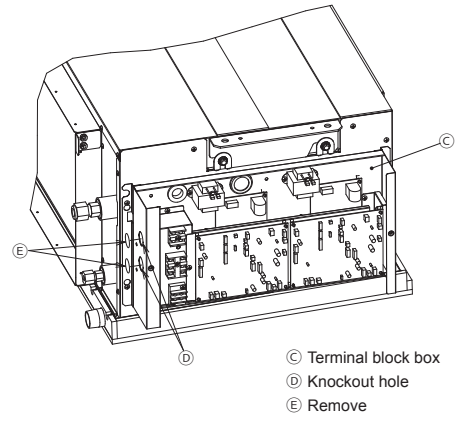
- Ⓐ Outdoor unit power supply
- Ⓑ Earth leakage breaker
- Ⓒ Wiring circuit breaker or isolating switch
- Ⓓ Outdoor unit
- Ⓔ Indoor unit/Outdoor unit connecting wire
- Ⓕ Remote controller (option)
- Ⓖ Indoor unit

[Fig. 8-2-1]



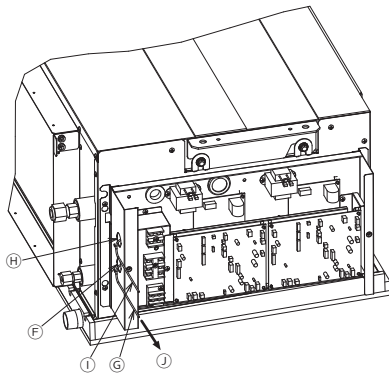
- A Screw holding cover (2pc)
- B Cover

[Fig. 8-2-2]



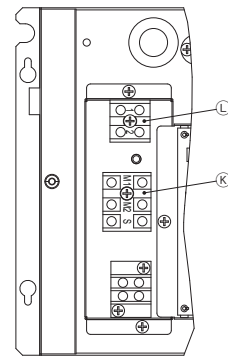
- C Terminal block box
- D Knockout hole
- E Remove

[Fig. 8-2-3]



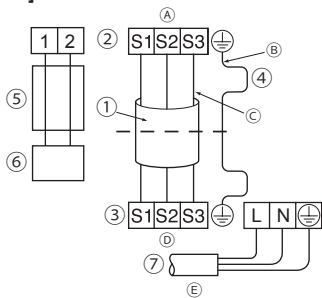
- F Use PG bushing to keep the weight of the cable and external force from being applied to the power supply terminal connector. Use a cable tie to secure the cable.
- G Indoor unit/outdoor unit connecting wire
- H Use ordinary bushing
- I Remote controller cable
- J Tensile force

[Fig. 8-2-4]



- K Terminal block for indoor/outdoor unit connecting wire
- L Terminal block for remote controller cable

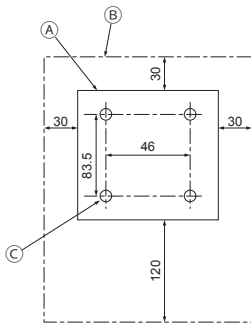
[Fig. 8-2-5]



- A Indoor terminal block
- B Earth wire (green/yellow)
- C Indoor/outdoor unit connecting wire 3-core 1.5 mm² or more
- D Outdoor terminal block
- E Power supply cord : 2.0 mm² or more
- 1 Connecting cable Cable 3-core 1.5 mm², in conformity with Design 245 IEC 57.
- 2 Indoor terminal block
- 3 Outdoor terminal block

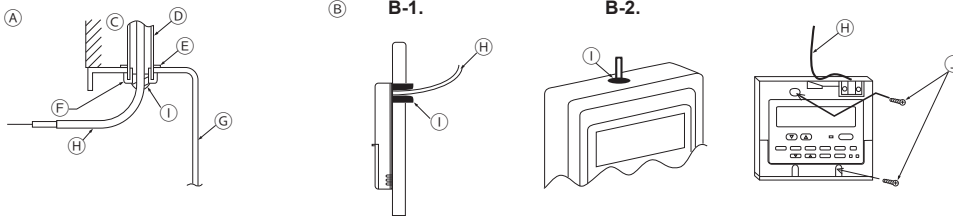
- 4 Always install an earth wire (1-core 1.5 mm²) longer than other cables
- 5 Remote controller cable Wire No x size (mm²) : Cable 2C x 0.3 This wire accessory of remote controller (wire length : 10m, non-polar. Max. 500m)
- 6 Wired remote controller (option)
- 7 Power supply cord Cable 3-core 2.0 mm² or more, in conformity with Design 245 IEC 57.

[Fig. 8-3-1]



- (A) Remote controller profile
- (B) Required clearances surrounding the remote controller
- (C) Installation pitch

[Fig. 8-3-2]



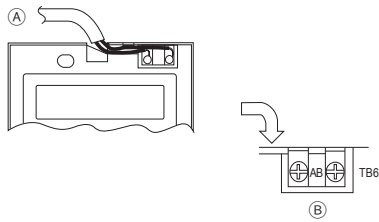
(A) For installation in the switch box:

(B) For direct installation on the wall select one of the following:

- Prepare a hole through the wall to pass the remote controller cord (in order to run the remote controller cord from the back), then seal the hole with putty.
- Run the remote controller cord through the cut-out upper case, then seal the cut-out notch with putty similarly as above.

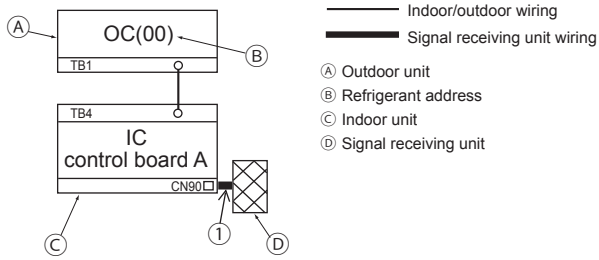
- (C) Wall
- (D) Conduit
- (E) Lock nut
- (F) Bushing
- (G) Switch box
- (H) Remote controller cord
- (I) Seal with putty
- (J) Wood screw

[Fig. 8-3-3]

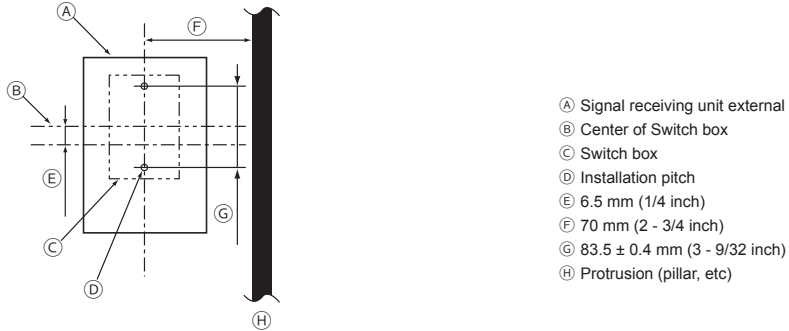


- (A) To the terminal block on the indoor unit
- (B) TB6 (No polarity)

[Fig. 8-4-1]

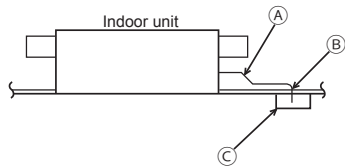


[Fig. 8-4-2]

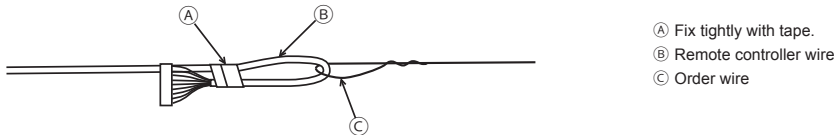


[Fig. 8-4-3]

Ceiling cassette type, Ceiling concealed type

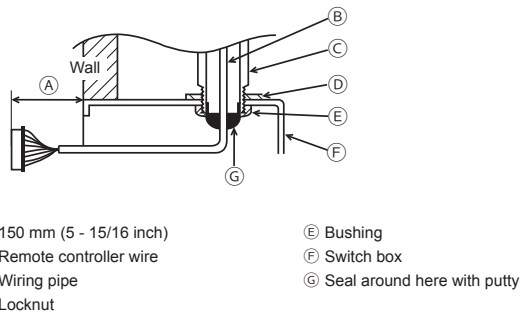


[Fig. 8-4-4]

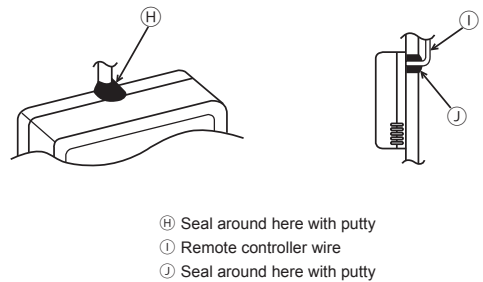


[Fig. 8-4-5]

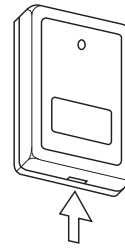
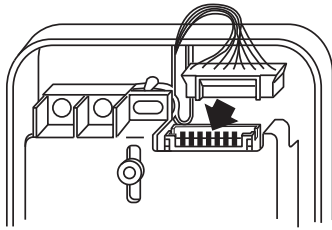
When using the switch box



When installing directly on the wall

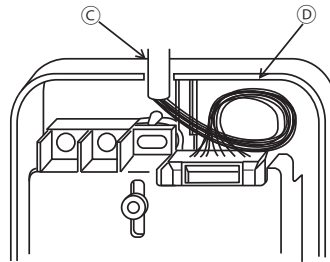
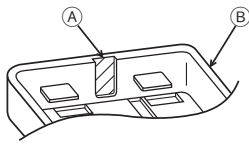


[Fig. 8-4-6]



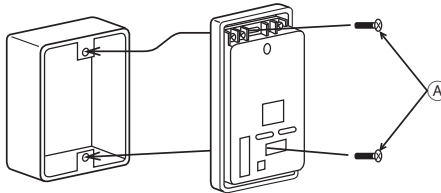
Insert the minus screwdriver toward the arrow pointed and wrench it to remove the cover.
A flat screwdriver whose width of blade is between 4 and 7mm (5/32 - 9/32inch) must be used.

[Fig. 8-4-7]



Ⓐ Thin-wall portion
Ⓑ Bottom case
Ⓒ Remote controller wire
Ⓓ Conducting wire

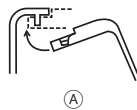
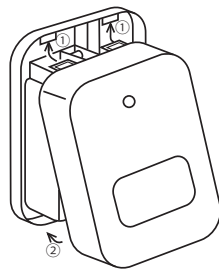
[Fig. 8-4-8]



Ⓐ Screw (M4 x 30)

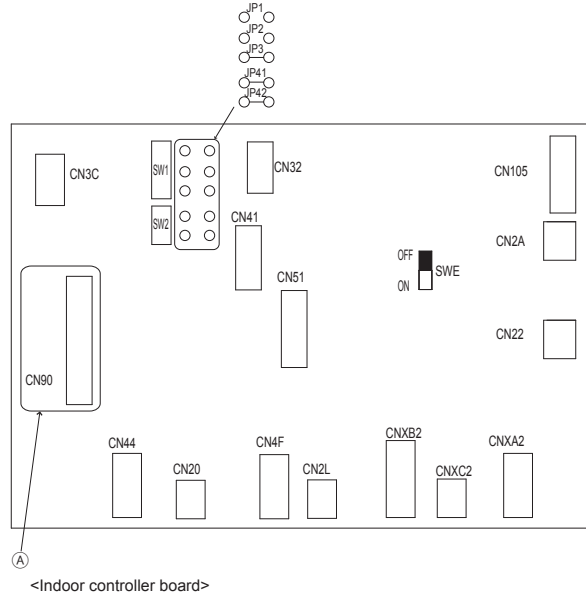
* When installing the lower case directly on the wall or the ceiling, use wood screws.

[Fig. 8-4-9]

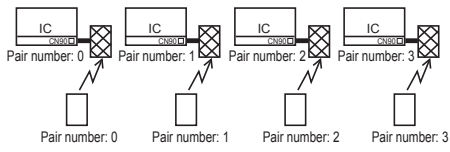


① Hang the cover to the upper hooks (2 places).
② Mount the cover to the lower case
Ⓐ Cross-section of upper hooks

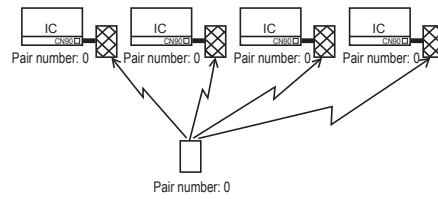
[Fig. 8-4-10]



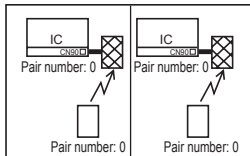
[Fig. 8-4-11]



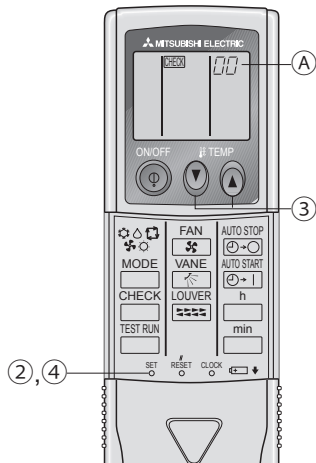
[Fig. 8-4-12]



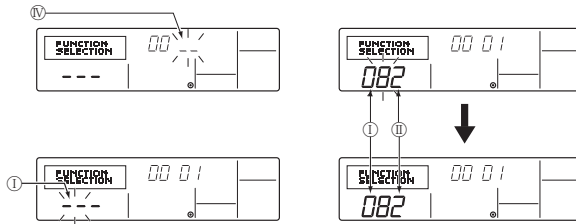
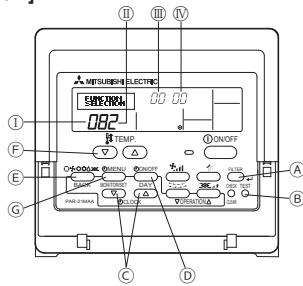
[Fig. 8-4-13]



[Fig. 8-4-14]

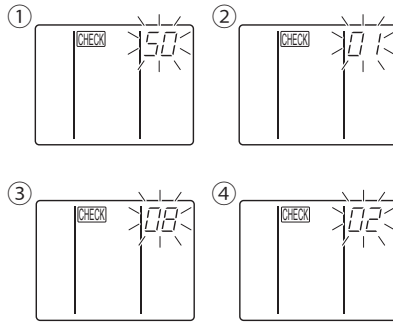
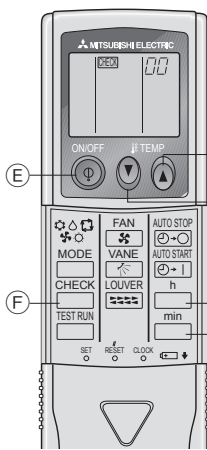


[Fig. 8-5-1]



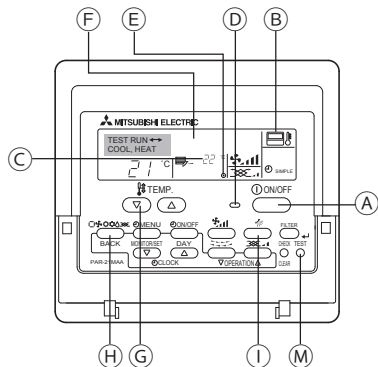
- ① Mode number
- ② Setting number
- ③ Refrigerant address
- ④ Unit number
- Ⓐ Filter ⏏ button (<Enter> button)
- Ⓑ TEST button
- Ⓒ Set Time button
- Ⓓ Timer On/Off button (Set Day button)
- Ⓔ Mode selection button
- Ⓕ Set temperature button
- Ⓖ Timer Menu button (Monitor/Set button)

[Fig.8-5-2]



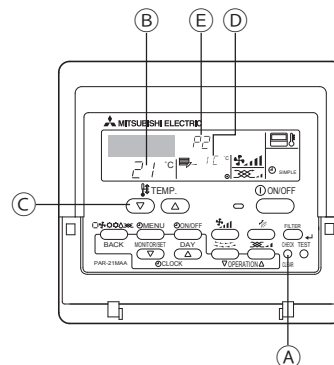
- Ⓐ Hour button
- Ⓑ Minute button
- Ⓒ TEMP button
- Ⓓ TEMP button
- Ⓔ ON/OFF button
- Ⓕ CHECK button

[Fig. 9-2-1]



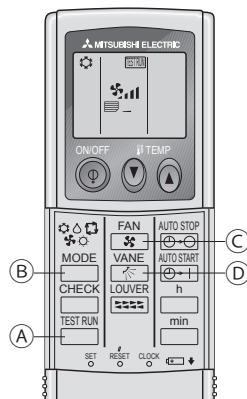
- Ⓐ ON/OFF button
- Ⓑ Error code display
- Ⓒ Test run display
- Ⓓ Error code display
- Ⓔ Test run remaining time display
- Ⓕ Indoor temperature liquid line temperature display
- Ⓖ Set temperature button
- Ⓓ ON/OFF lamp
- Ⓕ Mode selection button
- Ⓕ Fan speed button
- Ⓕ TEST button

[Fig. 9-2-2]



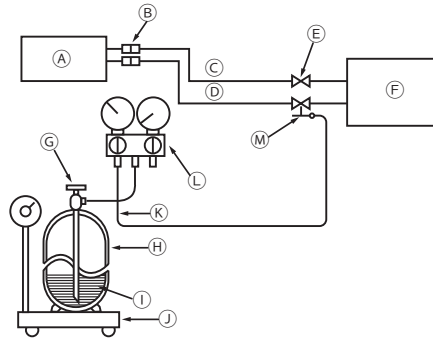
- Ⓐ CHECK button
- Ⓑ Refrigerant address
- Ⓒ TEMP. button
- Ⓓ IC: Indoor unit
- Ⓕ OC: Outdoor unit
- Ⓕ Check code

[Fig. 9-3]



- Ⓐ TEST RUN button
- Ⓑ MODE button
- Ⓒ FAN button
- Ⓓ VANE button

[Fig. 10-1]



- | | |
|--|--|
| Ⓐ Indoor unit | Ⓜ Service port |
| Ⓑ Union | Ⓝ Refrigerant (liquid) |
| Ⓒ Liquid pipe | Ⓞ Charge hose (for R410A) |
| Ⓓ Gas pipe | Ⓟ Gauge manifold valve (for R410A) |
| Ⓔ Stop valve | |
| Ⓕ Outdoor unit | |
| Ⓖ Refrigerant gas cylinder operating valve | |
| | Ⓢ Refrigerant gas cylinder for R410A with siphon |
| | Ⓣ Electronic scale for refrigerant charging |
| | Ⓤ Charge hose (for R410A) |
| | Ⓡ Gauge manifold valve (for R410A) |
| | Ⓜ Service port |

Contents

| | | | |
|---|----|--------------------------|----|
| 1. Safety precautions..... | 13 | 7. Duct work | 16 |
| 2. Selecting the installation location | 13 | 8. Electrical work | 17 |
| 3. Selecting an installation site & Accessories | 14 | 9. Test run..... | 20 |
| 4. Fixing hanging bolts | 14 | 10. Maintenance..... | 22 |
| 5. Installing the unit | 14 | 11. Specifications | 22 |
| 6. Refrigerant piping work | 15 | | |

Note: The phrase "Wired remote controller" in this installation manual refers only to the PAR-21MAA. If you need any information for THE PAR-31MAA, please refer to either the installation manual or initial setting manual which are included in PAR-31MAA box.

1. Safety precautions

- Please report to or take consent by the supply authority before connection to the system.
- Be sure to read "The following should always be observed for safety" before installing the air conditioner.
- Be sure to observe the cautions specified here as they include important items related to safety.
- The indications and meanings are as follows.

⚠ Warning:

Could lead to death, serious injury, etc.

⚠ Caution:

Could lead to serious injury in particular environments when operated incorrectly.

- After reading this manual, be sure to keep it together with the instruction manual in a handy place on the customer's site.

⚠ Warning:

- Do not use refrigerant other than the type indicated in the manuals provided with the unit and on the nameplate.

- Doing so may cause the unit or pipes to burst, or result in explosion or fire during use, during repair, or at the time of disposal of the unit.

- It may also be in violation of applicable laws.

- MITSUBISHI ELECTRIC CORPORATION cannot be held responsible for malfunctions or accidents resulting from the use of the wrong type of refrigerant.

- Do not install it by yourself (customer).

Incomplete installation could cause injury due to fire, electric shock, the unit falling or leakage of water. Consult the dealer from whom you purchased the unit or special installer.

- This appliance is not intended for use by persons (including children) with reduced physical, sensory or mental capabilities, or lack of experience and knowledge, unless they have been given supervision or instruction concerning use of the appliance by a person responsible for their safety.

- This appliance is intended to be used by expert or trained users in shops, in light industry and on farms, or for commercial use by lay persons.

- Install the unit securely in a place which can bear the weight of the unit.

When installed in an insufficient strong place, the unit could fall causing injured.

- Use the specified wires to connect the indoor and outdoor units securely and attach the wires firmly to the terminal board connecting sections so the stress of the wires is not applied to the sections.

Incomplete connecting and fixing could cause fire.

- Do not use intermediate connection of the power cord or the extension cord and do not connect many devices to one AC outlet.

It could cause a fire or an electric shock due to defective contact, defective

⚠ Caution:

- Perform grounding.

Do not connect the ground wire to a gas pipe, water pipe arrester or telephone ground wire. Defective grounding could cause an electric shock.

- Do not install the unit in a place where an inflammable gas leaks.

If gas leaks and accumulates in the area surrounding the unit, it could cause an explosion.

- Install a ground leakage breaker depending on the installation place (where it is humid).

If a ground leakage breaker is not installed, it could cause an electric shock.

2. Selecting the installation location

2.1. Indoor unit

- Where airflow is not blocked.
- Where cool air spreads over the entire room.
- Where it is not exposed to direct sunshine.
- At a distance 1 m or more away from your TV and radio (to prevent picture from being distorted or noise from being generated).

2.2. Outdoor unit

- Where it is not exposed to strong wind.
- Where airflow is good and dustless.
- Where it is not exposed to rain and direct sunshine.
- Where neighbours are not annoyed by operation sound or hot air.
- Where rigid wall or support is available to prevent the increase of operation sound or vibration.
- Where there is no risk of combustible gas leakage.
- When installing the unit at a high level, be sure to fix the unit legs.
- Where it is at least 3 m away from the antenna of TV set or radio. (Otherwise, images would be disturbed or noise would be generated.)

Symbols put on the unit

⊘ : Indicates an action that must be avoided.

⚠ : Indicates that important instructions must be followed.

⚡ : Indicates a part which must be grounded.

⚠ : Indicates that caution should be taken with rotating parts.

⚡ : Indicates that the main switch must be turned off before servicing.

⚡ : Beware of electric shock.

⚠ : Beware of hot surface.

⚠ Warning:

Carefully read the labels affixed to the main unit.

insulation, exceeding the permissible current, etc.

- Check that the refrigerant gas does not leak after installation has completed.

• Perform the installation securely referring to the installation manual. Incomplete installation could cause a personal injury due to fire, electric shock, the unit falling or leakage of water.

- Perform electrical work according to the installation manual and be sure to use an exclusive circuit.

If the capacity of the power circuit is insufficient or there is incomplete electrical work, it could result in a fire or an electric shock.

- If the supply cord is damaged, it must be replaced by the manufacturer, its service agent or similarly qualified persons in order to avoid a hazard.

- Attach the electrical part cover to the indoor unit and the service panel to the outdoor unit securely.

If the electrical part cover in the indoor unit and/or the service panel in the outdoor unit are not attached securely, it could result in a fire or an electric shock due to dust, water, etc.

- Be sure to use the part provided or specified parts for the installation work. The use of defective parts could cause an injury or leakage of water due to a fire, an electric shock, the unit falling, etc.

- Ventilate the room if refrigerant leaks during operation.

If the refrigerant comes in contact with a flame, poisonous gases will be released.

- Children should be supervised to ensure that they do not play with the appliance.

- The installer and system specialist shall secure safety against leakage according to local regulation or standards.

- Following standards may be applicable if local regulation are not available.

- Pay a special attention to the place, such as a basement, etc. where refrigeration gas can stay, since refrigeration is heavier than the air.

- Perform the drainage/piping work securely according to the installation manual.

If there is a defect in the drainage/piping work, water could drop from the unit and household goods could be wet and damaged.

- Fasten a flare nut with a torque wrench as specified in this manual.

When fastened too tight, a flare nut may broken after a long period and cause a leakage of refrigerant.

- In a place as far away as possible from fluorescent and incandescent lights (so the infrared remote control can operate the air conditioner normally).

- Where the air filter can be removed and replaced easily.

- Indoor units must be installed in a ceiling with a minimum height of 2.5 meters.

⚠ Warning:

Mount the indoor unit into a ceiling strong enough to withstand the weight of the unit.

- Install the unit horizontally.

⚠ Caution:

Avoid the following places for installation where air conditioner trouble is liable to occur.

- Where there is too much machine oil.

- Salty environment as seaside areas.

- Hot-spring areas.

- Where sulfide gas exists.

- Other special atmospheric areas.

3. Selecting an installation site & Accessories

- Select a site with sturdy fixed surface sufficiently durable against the weight of unit.
- Before installing unit, the routing to carry in unit to the installation site should be determined.
- Select a site where the unit is not affected by entering air.
- Select a site where the flow of supply and return air is not blocked.
- Select a site where refrigerant piping can easily be led to the outside.
- Select a site which allows the supply air to be distributed fully in room.
- Do not install unit at a site with oil splashing or steam in much quantity.
- Do not install unit at a site where combustible gas may generate, flow in, stagnate or leak.
- Do not install unit at a site where equipment generating high frequency waves (a high frequency wave welder for example) is provided.
- Do not install unit at a site where fire detector is located at the supply air side. (Fire detector may operate erroneously due to the heated air supplied during heating operation.)
- When special chemical product may scatter around such as site chemical plants and hospitals, full investigation is required before installing unit. (The plastic components may be damaged depending on the chemical product applied.)
- If the unit is run for long hours when the air above the ceiling is at high temperature/high humidity (dew point above 26 °C), dew condensation may be produced in the indoor unit. When operating the units in this condition, add insulation material (10-20 mm) to the entire surface of the indoor unit to avoid dew condensation.

3.1. Install the indoor unit on a ceiling strong enough to sustain its weight

Warning:
 The unit must be securely installed on a structure that can sustain its weight. If the unit is mounted on an unstable structure, it may fall down causing injuries.

3.2. Securing installation and service space

Secure enough access space to allow for the maintenance, inspection, and replacement of the motor, fan, drain pump, heat exchanger, and electric box in one of the following ways.
 Select an installation site for the indoor unit so that its maintenance access space will

not be obstructed by beams or other objects.

[Maintenance access space]

Secure enough access space to allow for the maintenance, inspection, and replacement of the motor, fan, drain pan, heat exchanger, and electric box in one of the following ways.

Select an installation site for the indoor unit so that its maintenance access space will not be obstructed by beams or other objects.

- (1) When a space of 500mm or more is available below the unit between the unit and the ceiling. [Fig. 3-2-1][Fig. 3-2-2]
 - Create access door 1 and 2 (450x450 mm each) as shown in [Fig. 3-2-3]. (Access door 2 is not required if enough space is available below the unit for a maintenance worker to work in.)
 - An access hole of the same size as the access door 3 as shown in [Fig. 3-2-6] is required to access drain pan or heat exchanger for replacement. (Required only when the ceiling material cannot be removed.)

- (2) When a space of less than 500mm is available below the unit between the unit and the ceiling. (At least 300 mm of space should be left below the unit as shown in [Fig. 3-2-4] [Fig. 3-2-5].)
 - Create access door 3 below the electric box and the unit as shown in [Fig. 3-2-6].

- [Fig. 3-2-1] (P.2)
- [Fig. 3-2-2] (P.2)
- [Fig. 3-2-3] (P.2)
- [Fig. 3-2-4] (P.2)
- [Fig. 3-2-5] (P.2)
- [Fig. 3-2-6] (P.2)

3.3. Indoor unit accessories

The unit is provided with the following accessories:

| No. | Name | Quantity |
|-----|--|----------|
| ① | Pipe cover (for refrigerant piping joint) Small diameter | 1 |
| ② | Pipe cover (for refrigerant piping joint) Large diameter | 1 |

4. Fixing hanging bolts

4.1. Fixing hanging bolts

[Fig. 4-1] (P.3)

Ⓐ Center of gravity

(Give site of suspension strong structure.)

Hanging structure

• Ceiling: The ceiling structure varies from building to one another. For detailed information, consult your construction company.

• If necessary, reinforce the hanging bolts with anti-quake supporting members as countermeasures against earthquakes.

* Use M10 for hanging bolts and anti-quake supporting members (field supply).

- ① Reinforcing the ceiling with additional members (edge beam, etc.) must be required to keep the ceiling at level and to prevent the ceiling from vibrations.
- ② Cut and remove the ceiling members.
- ③ Reinforce the ceiling members, and add other members for fixing the ceiling boards.

5. Installing the unit

5.1. Hanging the unit body

- ▶ Bring the indoor unit to an installation site as it is packed.
- ▶ To hang the indoor unit, use a lifting machine to lift and pass through the hanging bolts.

[Fig. 5-1-1] (P.3)

Ⓐ Unit body

Ⓑ Lifting machine

* Two installation methods are available
 <When hanging the indoor unit directly>

1. Attach a washer and nut(s) to each suspension bolt. (The washers and nuts are to be supplied locally.)
2. Fit the indoor unit to each suspension bolt.
3. Make sure that the unit is positioned level, then tighten each nut.

[Fig. 5-1-2] (P.3)

Ⓐ Nut

Ⓑ Washer

(Unit: mm)

| | A | B |
|---------------------------|-------------|-------------|
| When using inlet duct | 100 or more | 130 or more |
| When not using inlet duct | 0 or more | 30 or more |

Nut (*1) is not required if distance A is 0 mm.

<When installing the suspension fixture prior to installation of the indoor unit>

1. Loosen each suspension fixture bolt slightly, and remove the fixture and U-shaped washers.

2. Adjust each suspension fixture bolt.

3. Attach a washer, nut and suspension fixture to each suspension bolt. (The washers and nuts are to be supplied locally.)

4. Hook the indoor unit to the suspension fixtures.

5. Make sure that the unit is positioned level, then tighten each nut.

[Fig. 5-1-3] (P.3)

Ⓐ Be sure to attach a U-shaped washer (4 washers in total).

(Unit: mm)

| | A | B |
|---------------------------|-------------|-------------|
| When using inlet duct | 100 or more | 130 or more |
| When not using inlet duct | 25 or more | 55 or more |

5.2. Confirming the unit's position and fixing hanging bolts

- ▶ Use the gage supplied with the panel to confirm that the unit body and hanging bolts are positioned in place. If they are not positioned in place, it may result in dew drops due to wind leak. Be sure to check the positional relationship.
- ▶ Install the unit horizontally, using a level. Ensure that the hanging bolt nuts are tightened to fix the hanging bolts.
- ▶ To ensure that drain is discharged, be sure to hang the unit at level using a level.

Caution:
 Be sure to install the unit body at level.

6. Refrigerant piping work

6.1. Refrigerant pipe

[Fig. 6-1] (P.3)

- Ⓐ Indoor unit
- Ⓑ Outdoor unit

Refer to the Instruction Manual that came with the outdoor unit for the restrictions on the height difference between units and for the amount of additional refrigerant charge.

Avoid the following places for installation where air conditioner trouble is liable to occur.

- Where there is too much oil such as for machine or cooking.
- Salty environment as seaside areas.
- Hot-spring areas.
- Where sulfide gas exists.
- Other special atmospheric areas.
- This unit has flared connections on both indoor and outdoor sides. [Fig. 6-1]
- Insulate both refrigerant and drainage piping completely to prevent condensation.

Piping preparation

- Refrigerant pipes of 3, 5, 7, 10 and 15 m are available as optional items.

(1) Table below shows the specifications of pipes commercially available.

| Model | Pipe | Outside diameter | | Min wall thickness | Insulation thickness | Insulation material |
|---------------------|------------|------------------|------|--------------------|----------------------|--|
| | | mm | inch | | | |
| PEA-RP100, 125, 140 | For liquid | 9.52 | 3/8 | 0.8 mm | 8 mm | Heat resisting foam plastic 0.045 specific gravity |
| | For gas | 15.88 | 5/8 | 1.0 mm | 8 mm | |

(2) Ensure that the 2 refrigerant pipes are well insulated to prevent condensation.

(3) Refrigerant pipe bending radius must be 10 cm or more.

⚠ Caution:

Using careful insulation of specified thickness. Excessive thickness prevents storage behind the indoor unit and smaller thickness causes dew drippage.

6.2. Flaring work

- Main cause of gas leakage is defect in flaring work.
- Carry out correct flaring work in the following procedure.

6.2.1. Pipe cutting

[Fig. 6-2-1] (P.4)

- Ⓐ Copper tubes
- Ⓑ Good
- Ⓒ No good
- Ⓓ Tilted
- Ⓔ Uneven
- Ⓕ Burred

- Using a pipe cutter cut the copper tube correctly.

6.2.2. Burrs removal

[Fig. 6-2-2] (P.4)

- Ⓐ Burr
- Ⓑ Copper tube/pipe
- Ⓒ Spare reamer
- Ⓓ Pipe cutter

- Completely remove all burrs from the cut cross section of pipe/tube.
- Put the end of the copper tube/pipe to downward direction as you remove burrs in order to avoid burrs drop in the tubing.

6.2.3. Putting nut on

[Fig. 6-2-3] (P.4)

- Ⓐ Flare nut
- Ⓑ Copper tube

- Remove flare nuts attached to indoor and outdoor unit, then put them on pipe/tube having completed burr removal.
- (not possible to put them on after flaring work)

6.2.4. Flaring work

[Fig. 6-2-4] (P.4)

- Ⓐ Flaring tool
- Ⓑ Die
- Ⓒ Copper tube
- Ⓓ Flare nut
- Ⓔ Yoke

- Carry out flaring work using flaring tool.

| Pipe diameter (mm) | Dimension | |
|--------------------|---------------------------------|-----------------------|
| | A (mm) | |
| | When the tool for R410A is used | |
| 9.52 | Clutch type | |
| | 0 - 0.5 | B $^{+0}_{-0.4}$ (mm) |
| 15.88 | 0 - 0.5 | 13.2 |
| | | 19.7 |

Firmly hold copper tube in a die in the dimension shown in the table at above.

6.2.5. Check

[Fig. 6-2-5] (P.4)

- Ⓐ Smooth all around
- Ⓑ Inside is shining without any scratches
- Ⓒ Even length all around
- Ⓓ Too much
- Ⓔ Tilted
- Ⓕ Scratch on flared plane
- Ⓖ Cracked
- Ⓗ Uneven
- Ⓖ Bad examples

- Compare the flared work with a figure in right side hand.
- If flare is noted to be defective, cut off the flared section and do flaring work again.

6.3. Pipe connection

[Fig. 6-3-1] (P.4)

- Apply a thin coat of refrigeration oil on the seat surface of pipe.
- For connection first align the center, then tighten the first 3 to 4 turns of flare nut.
- Use tightening torque table below as a guideline for indoor unit side union joint section, and tighten using two wrenches. Excessive tightening damages the flare section.

| Copper pipe O.D. (mm) | Flare nut O.D. (mm) | Tightening torque (N·m) |
|-----------------------|---------------------|-------------------------|
| ø9.52 | 22 | 34 - 42 |
| ø15.88 | 29 | 68 - 82 |

⚠ Warning:

Be careful of flying flare nut! (Internally pressurized)

Remove the flare nut as follows:

1. Loosen the nut until you hear a hissing noise.
2. Do not remove the nut until the gas has been completely released (i.e., hissing noise stops).
3. Check that the gas has been completely released, and then remove the nut.

Outdoor unit connection

Connect pipes to stop valve pipe joint of the outdoor unit in the same manner applied for indoor unit.

- For tightening use a torque wrench or spanner, and use the same tightening torque applied for indoor unit.

Refrigerant pipe insulation

- After connecting refrigerant piping, insulate the joints (flared joints) with thermal insulation tubing.

[Fig. 6-3-2] (P.4)

Ⓐ Pipe cover (small) (accessory)

Ⓑ Caution:

Pull out the thermal insulation on the refrigerant piping at the site, insert the flare nut to flare the end, and replace the insulation in its original position.

Take care to ensure that condensation does not form on exposed copper piping.

- Ⓒ Liquid end of refrigerant piping
- Ⓓ Site refrigerant piping
- Ⓔ Pipe cover (large) (accessory)
- Ⓕ Pull
- Ⓖ Return to original position
- Ⓗ Plate on main body
- Ⓖ Ensure that there is no gap here. Place join upwards.
- Ⓓ Gas end of refrigerant piping
- Ⓕ Main body
- Ⓖ Thermal insulation (field supply)
- Ⓕ Flare nut
- Ⓕ Ensure that there is no gap here
- Ⓕ Band (accessory)

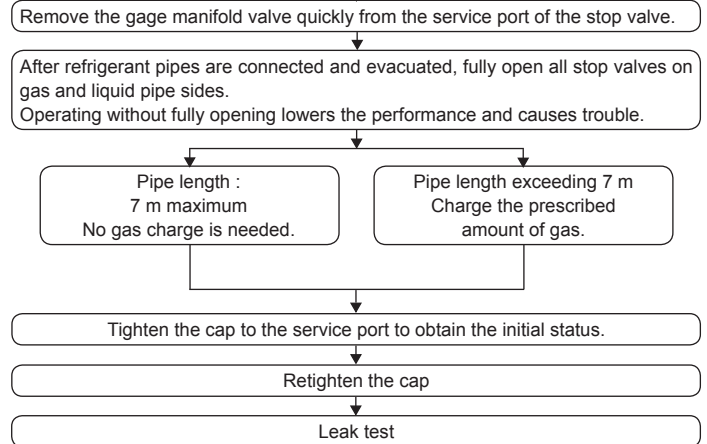
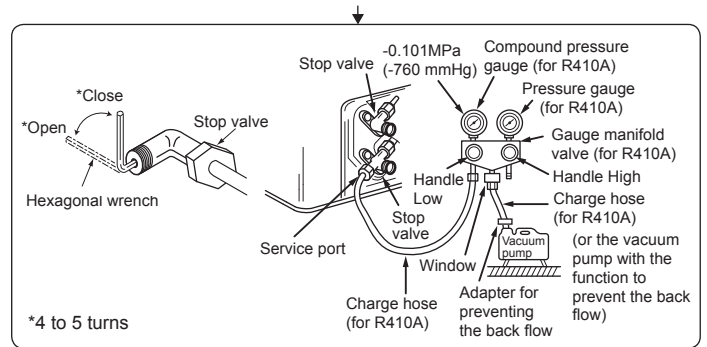
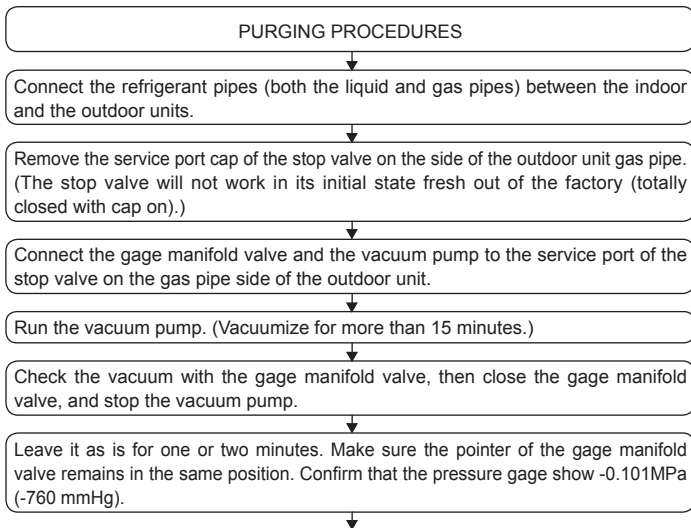
6. Refrigerant piping work

1. Remove and discard the rubber bung which is inserted in the end of the unit piping.
2. Flare the end of the site refrigerant piping.
3. Pull out the thermal insulation on the site refrigerant piping and replace the insulation in its original position.

Cautions On Refrigerant Piping

- ▶ Be sure to use non-oxidative brazing for brazing to ensure that no foreign matter or moisture enter into the pipe.
- ▶ Be sure to apply refrigerating machine oil over the flare connection seating surface and tighten the connection using a double spanner.
- ▶ Provide a metal brace to support the refrigerant pipe so that no load is imparted to the indoor unit end pipe. This metal brace should be provided 50 cm away from the indoor unit's flare connection.

6.4. Purging procedures leak test



6.5. Drain piping work

[Fig. 6-5] (P.4)

- Ⓐ Insulator
- Ⓑ Drain pipe R1
- Ⓒ Drain pan
- Ⓓ ≥ 70 mm
- Ⓔ ≥ 2 × Ⓕ ≥ 70 mm
- Ⓖ ≥ 35 mm
- Ⓖ Downward slope 20 mm/m or more
- Ⓗ Drain trap
- ① The drain pipe should extend below this level.
- ① Open drain

7. Duct work

- In connecting duct, insert canvas duct between unit and duct.
- Use incombustible material for duct parts.
- Provide full insulation to inlet duct flange, outlet duct flange and outlet duct to prevent condensation.
- Be sure to apply the air filter near the air inlet grille.
- Before connecting an inlet duct, install the air filter in the inlet grille.

[Fig. 7-1-1] (P.5)

- Ⓐ Air inlet
- Ⓑ Air outlet
- Ⓒ Access door
- Ⓓ Ceiling surface
- Ⓔ Canvas duct
- Ⓕ Keep duct-work length 850 or more
- Ⓖ Connect common reference potential wire between duct-work to air conditioner

⚠ Caution:

- Inlet duct of 850 mm or more should be constructed. To connect the air conditioner main body and the duct for potential equalization.
- To reduce the risk of injury from metal sheet edges, wear protective gloves.
- Install sufficient thermal insulation to prevent condensation forming on outlet duct flanges and outlet ducts.
- To avoid electrical noise interference, do not run transmission lines at the bottom of the unit.
- Return air temperature sensor when an inlet duct is installed. A return air temperature sensor is installed on the inlet duct flange. Before connecting an inlet duct, this sensor must be removed and installed in the specified position.

[Fig. 7-1-2] (P.5)

- Ⓐ Inlet duct flange
- Ⓑ Return air temperature sensor
- Ⓒ Sensor protection plate
- Ⓓ Sensor fixture
- Ⓔ Inlet duct

- ① Pull out the sensor, and remove the sensor fixture and protection plate. (The protection plate must be discarded.)
 - ② Connect the inlet duct.
 - ③ Drill a sensor hole (ø12.5 dia.) on the side on the duct.
 - ④ Assemble the sensor and fixture.
- When pulling out the sensor, do not pull it by the lead wire. Doing so may result in wire breakage.
 - Before connecting the inlet duct, make sure that the sensor, its fixture and protection plate are removed.
 - The sensor removed in step ① must be re-installed in the position specified in the drawing. Installation of the sensor in an incorrect position may result in malfunction.

Mount holes for outlet duct flange and inlet duct.

[Fig. 7-1-3] (P.5)

- Ⓐ Inlet duct flange
- Ⓑ Outlet duct flange
- Ⓒ Top of the unit

8. Electrical work

8.1. Power supply

8.1.1. Indoor unit power supplied from outdoor unit

[Fig. 8-1] (P.5)

- Ⓐ Outdoor unit power supply
- Ⓑ Earth leakage breaker
- Ⓒ Wiring circuit breaker or isolating switch
- Ⓓ Outdoor unit
- Ⓔ Indoor unit/outdoor unit connecting cords
- Ⓕ Remote controller (option)
- Ⓖ Indoor unit

Field electrical wiring

| Indoor unit model | | PEA |
|---|---|---------------------------|
| Wiring Wire No. x size (mm ²) | Indoor unit power supply (Heater) | — |
| | Indoor unit power supply (Heater) earth | — |
| | Indoor unit-Outdoor unit | 3 × 1.5 (polar) |
| | Indoor unit-Outdoor unit earth | 1 × Min. 1.5 |
| | Remote controller-Indoor unit | *1 2 × 0.3 (Non-polar) |
| Circuit rating | Indoor unit (Heater) L-N | *2 — |
| | Indoor unit-Outdoor unit S1-S2 | *2 230 V AC |
| | Indoor unit-Outdoor unit S2-S3 | *2 24 V DC |
| | Remote controller-Indoor unit | *2 14 V DC |

*1. The 10 m wire is attached in the remote controller accessory. Max. 500 m

*2. The figures are NOT always against the ground.

S3 terminal has 24 V DC against S2 terminal. However between S3 and S1, these terminals are not electrically insulated by the transformer or other device.

- Notes:**
1. Wiring size must comply with the applicable local and national code.
 2. Power supply cords and indoor unit/outdoor unit connecting cords shall not be lighter than polychloroprene sheathed flexible cord. (Design 245 IEC57)
 3. Install an earth longer than other cables.

- PEA-RP-GAA has two power boards and two control boards respectively. (AB in Fig. 8-1)
Check the wiring details on the plate affixed to the unit and be sure not to wire incorrectly.
- PEA-RP-GAA has two control boards. Therefore, "No.1" unit or "No.2" unit is displayed on the remote controller when an initial setup is performed or an error occurs.
Control Board A is not always No.1 unit and Control Board B is not always No.2 unit. Check the both control boards in case of a malfunction of the fan motor or the sensor.
- Connect the connectors of external input/output devices to the circuit board to which the remote controller is connected.

8.2. Indoor wire connection

Please identify the model name of the operation manual attached on the terminal block box with that shown on the rating name plate.

1. Remove the screw (2pcs) holding the cover to dismount the cover.

[Fig. 8-2-1] (P.6)

- Ⓐ Screw holding cover (2pcs)
- Ⓑ Cover

2. Open knockout holes

(Recommend to use a screwdriver or the like for this work.)

[Fig. 8-2-2] (P.6)

- Ⓒ Terminal block box
- Ⓓ Knockout hole
- Ⓔ Remove

3. Fix indoor unit/outdoor unit connecting wire to terminal block box by using buffer bushing for tensile force. (PG connection or the like.) Connect remote controller cable to terminal block through the knockout hole of terminal block box using ordinary bushing.

[Fig. 8-2-3] (P.6)

- Ⓕ Use PG bushing to keep the weight of the cable and external force from being applied to the power supply terminal connector. Use a cable tie to secure the cable.
- Ⓖ Indoor unit/outdoor unit connecting wire
- Ⓗ Use ordinary bushing
- Ⓘ Remote controller cable
- Ⓙ Tensile force

[Fig. 8-2-4] (P.6)

- Ⓚ Terminal block for indoor/outdoor unit connecting wire
- Ⓛ Terminal block for remote controller cable

4. After wiring is complete, make sure again that there is no slack on the connections, and attach the cover onto the terminal block box in the reverse order of removal.

⚠ Warning:

- Attach the electrical part cover securely. If it is attached incorrectly, it could result in a fire, electric shock due to dust, water, etc.

- Use the specified indoor/outdoor unit connecting wire to connect the indoor and outdoor units and fix the wire to the terminal block securely so that no stress is applied to the connecting section of the terminal block. Incomplete connection or fixing of the wire could result in a fire.
- Do not pinch the cables or wires when attaching the terminal block box cover. Doing so may cause a risk of disconnection.
- When accommodating the terminal block box, make sure that the connectors on the box side are not removed. If removed, it cannot operate normally.

[Fig. 8-2-5] (P.6)

- Ⓐ Indoor terminal block
- Ⓑ Earth wire (green/yellow)
- Ⓒ Indoor/outdoor unit connecting wire 3-core 1.5 mm² or more
- Ⓓ Outdoor terminal block
- Ⓔ Power supply cord : 2.0 mm² or more
- ① Connecting cable
Cable 3-core 1.5 mm², in conformity with Design 245 IEC 57.
- ② Indoor terminal block
- ③ Outdoor terminal block
- ④ Always install an earth wire (1-core 1.5 mm²) longer than other cables
- ⑤ Remote controller cable
Wire No x size (mm²) : Cable 2C x 0.3
This wire accessory of remote controller
(wire length : 10 m, non-polar. Max. 500 m)
- ⑥ Wired remote controller (option)
- ⑦ Power supply cord
Cable 3-core 2.0 mm² or more, in conformity with Design 245 IEC 57.

- Perform wiring as shown in [Fig. 8-2-5] (P.6). (Procure the cable locally.)
Make sure to use cables of the correct polarity only.
- Connect the terminal blocks as shown in [Fig. 8-2-5] (P.6).

⚠ Caution:

- Use care not to make mis-wiring.
- Firmly tighten the terminal screws to prevent them from loosening.
- After tightening, pull the wires lightly to confirm that they do not move.

8.3. Remote controller (wired remote controller (option))

8.3.1. For wired remote controller

1) Installing procedures

- (1) Select an installing position for the remote controller.

The temperature sensors are located on both remote controller and indoor unit.

► Procure the following parts locally:

- Two piece switch box
- Thin copper conduit tube
- Lock nuts and bushings

[Fig. 8-3-1] (P.7)

- Ⓐ Remote controller profile
- Ⓑ Required clearances surrounding the remote controller
- Ⓒ Installation pitch

- (2) Seal the service entrance for the remote controller cord with putty to prevent possible invasion of dew drops, water, cockroaches or worms.

[Fig. 8-3-2] (P.7)

- Ⓐ For installation in the switch box:

- Ⓑ For direct installation on the wall select one of the following:

- Prepare a hole through the wall to pass the remote controller cord (in order to run the remote controller cord from the back), then seal the hole with putty.
- Run the remote controller cord through the cut-out upper case, then seal the cut-out notch with putty similarly as above.

- Ⓒ Wall
- Ⓓ Conduit
- Ⓔ Lock nut
- Ⓕ Bushing
- Ⓖ Switch box
- Ⓗ Remote controller cord
- Ⓘ Seal with putty
- Ⓙ Wood screw

B-1. To lead the remote controller cord from the back of the controller:

B-2. To run the remote controller cord through the upper portion:

- (3) For direct installation on the wall

2) Connecting procedures

- ① Connect the remote controller cord to the terminal block.

[Fig. 8-3-3] (P.7)

- Ⓐ To the terminal block on the indoor unit
- Ⓑ TB6 (No polarity)

- ② Set the dip switch No.1 shown below when using two remote controller's for the same group.

3) Function selection of remote controller

If two remote controllers are connected, set one to "Main" and the other to "Sub". For setting procedures, refer to "Function selection of remote controller" in the operation manual for the indoor unit.

8. Electrical work

8.4. Remote controller (wireless remote controller (option))

8.4.1. For wireless remote controller (option)

1) Installation area

- Area in which the remote controller is not exposed to direct sunshine.
- Area in which there is no near by heating source.
- Area in which the remote controller is not exposed to cold (or hot) winds.
- Area in which the remote controller can be operated easily.
- Area in which the remote controller is beyond the reach of children.

* The signal can travel up to approximately 7 meters (in a straight line) within 45 degrees to both right and left of the center line of the receiver.

* Connect the infrared remote controller signal receiver sensor to the circuit board on the A-side.

8.4.2. Signal Receiving Unit

1) Sample system connection

[Fig. 8-4-1] (P.8)

Only the wiring from the signal receiving unit and between the remote controllers is shown in [Fig. 8-4-1]. The wiring differs depending on the unit to be connected or the system to be used.

For details on restrictions, refer to the installation manual or the service handbook that came with the unit.

1. Connecting to Mr. SLIM air conditioner

(1) Standard 1:1

- ① Connecting the signal receiving unit
Connect the signal receiving unit to the CN90 (Connect to the wireless remote controller board) on the indoor unit using the supplied remote controller wire. Connect the signal receiving units to all the indoor units.

2) How To Install

[Fig. 8-4-2] (P.8) to [Fig. 8-4-9] (P.9)

1. Common items for "Installation on the ceiling" and "Installation on the switch box or on the wall"

[Fig. 8-4-2] (P.8)

- | | |
|----------------------------------|---------------------------------|
| Ⓐ Signal receiving unit external | Ⓔ 6.5 mm (1/4 inch) |
| Ⓑ Center of Switch box | Ⓕ 70 mm (2 - 3/4 inch) |
| Ⓒ Switch box | Ⓖ 83.5 ± 0.4 mm (3 - 9/32 inch) |
| Ⓓ Installation pitch | Ⓗ Protrusion (pillar, etc) |

[Fig. 8-4-3] (P.8)

- | |
|--|
| Ⓐ Remote controller wire |
| Ⓑ Hole (drill a hole on the ceiling to pass the remote controller wire.) |
| Ⓒ Signal Receiving Unit |

(1) Select the installation site.

The following must be observed.

- ① Connect the signal receiving unit to the indoor unit with the supplied remote controller wire. Note that the length of the remote controller wire is 5 m (16 ft). Install the remote controller within the reach of the remote controller wire.
- ② When installing on either the switch box or the wall, allow space around the Signal Receiving Unit as shown in the figure in [Fig. 8-4-2].
- ③ When installing the Signal Receiving Unit to the switch box, the Signal Receiving Unit slipped downward for 6.5 mm (1/4 inch) as right illustrated.
- ④ Parts which must be supplied on site.
Switch box for one unit
Thin-copper wiring pipe
Lock nut and bushing
- ⑤ The thickness of the ceiling to which the remote controller is installed must be between 9 mm (3/8 inch) and 25 mm (1 inch).
- ⑥ Install the unit on the ceiling or on the wall where the signal can be received from the wireless remote controller.
The area where the signal from the wireless remote controller can be received is 45 ° and 7 m (22 ft) away from the front of the signal receiving unit.
- ⑦ Install the signal receiving unit to the position depending on the indoor unit model.
- ⑧ Connect the remote controller wire securely to the order wire. To pass the remote controller wire through the conduit.

[Fig. 8-4-4] (P.8)

- | | |
|--------------------------|--------------|
| Ⓐ Fix tightly with tape. | Ⓒ Order wire |
| Ⓑ Remote controller wire | |

Note:

- The point where the remote controller wire is connected differs depending on the indoor unit model.
Take into account that the remote controller wire cannot be extended when selecting the installation site.
- If the Signal Receiving Unit is installed near a fluorescent lamp specially inverter type, signal interception may occur.
Be careful for installing the Signal Receiving Unit or replacing the lamp.

(2) Use the remote controller wire to connect it to the connector (CN90) on the controller circuit board on the indoor unit.

(3) Seal the Signal Receiving Unit cord lead-in hole with putty in order to prevent the possible entry of dew, water droplets, cockroaches, other insects, etc.

[Fig. 8-4-5] (P.8)

- | | |
|---------------------------|-------------------------------|
| Ⓐ 150 mm (5 - 15/16 inch) | Ⓔ Bushing |
| Ⓑ Remote controller wire | Ⓕ Switch box |
| Ⓒ Wiring pipe | Ⓖ Seal around here with putty |
| Ⓓ Locknut | |

- When installing on the switch box, seal the connections between the switch box and wiring pipe with putty.

[Fig. 8-4-5] (P.8)

- | | |
|-------------------------------|-------------------------------|
| Ⓐ Seal around here with putty | Ⓔ Seal around here with putty |
| Ⓓ Remote controller wire | |

- When opening a hole using a drill for Signal Receiving Unit wire (or taking the wire out of the back of the Signal Receiving Unit), seal that hole with putty.
- When routing the wire via the portion cut off from the upper case, equally seal that portion with putty.

(4) Install the remote control wire to the terminal block. [Fig. 8-4-6] (P.9)

(5) Installing hole when the Signal Receiving Unit is installed on the wall direct. [Fig. 8-4-7] (P.9)

- Cut the thin-wall portion inside the bottom case (oblique section) by a knife or a nipper.
- Take out the connected remote controller wire to the terminal block through this space.

(6) Install the lower case on the switch box or directly on the wall. [Fig. 8-4-8] (P.9)
Mounting the cover [Fig. 8-4-9] (P.9)

⚠ Caution:

- Insert the cover securely until the clicking sound is made. If not doing so, the cover may fall.

8.4.3. Setting

1) Setting the pair number switch

[Fig. 8-4-10] (P.10)

1. Setting method

Assign the same pair number to the wireless remote controller as that of the indoor unit. If not doing so, the remote controller cannot be operated. Refer to the installation manual that came with the wireless remote controller for how to set pair numbers of wireless remote controllers.

Position of daisy wire on the controller circuit board on the indoor unit.

Controller circuit board on the indoor unit (reference) [Fig. 8-4-10] (P.10)

Ⓐ CN90: Connector for remote controller wire connection

For pair number settings, the following 4 patters (A-D) are available.

| Pair number setting pattern | Pair number on remote controller side | Indoor controller circuit board side Point where the daisy wire is disconnected |
|-----------------------------|---------------------------------------|---|
| A | 0 | Not disconnected |
| B | 1 | J41 disconnected |
| C | 2 | J42 disconnected |
| D | 3-9 | J41 and J42 disconnected |

2. Setting example

(1) To use the units in the same room

[Fig. 8-4-11] (P.10)

- ① Separate setting
Assign a different pair number to each indoor unit to operate each indoor unit by its own wireless remote controller.

[Fig. 8-4-12] (P.10)

- ② Single setting
Assign the same pair number to all the indoor units to operate all the indoor units by a single wireless remote controller.

[Fig. 8-4-13] (P.10)

(2) To use the units in different rooms

Assign the same pair number to the wireless remote controller as that of the indoor unit. (Leave the setting as it is at purchase.)

2) Setting the Model No.

[Fig. 8-4-14] (P.10)

- ① Insert batteries.
- ② Press the SET button with something sharp at the end.
MODEL SELECT blinks and Model No. lighted.
- ③ Press the temp \uparrow \downarrow button to set the Model No.
- ④ Press the SET button with something sharp at the end.
MODEL SELECT and Model No. are lighted for three seconds, then turned off.

| Indoor Unit Model | Ⓐ Model No. |
|-------------------|-------------|
| PEA | 251 |

8. Electrical work

8.5. Function settings (Function selection via the remote controller)

8.5.1 Function setting on the unit (Selecting the unit functions)

1) For wired remote controller [Fig. 8-5-1] (P.11)

1. Changing the external static pressure setting.

- Be sure to change the external static pressure setting depending on the duct and the grill used.

- Go to the function setting mode.
Switch OFF the remote controller.
Press the (A) and (B) buttons simultaneously and hold them for at least 2 seconds. FUNCTION will start to flash.
- Use the (C) button to set the refrigerant address (III) to 00.
- Press (D) and [-] will start to flash in the unit number (IV) display.
- Use the (C) button to set the unit number (IV) to AL.
- Press the (E) MODE button to designate the refrigerant address/unit number.
[-] will flash in the mode number (I) display momentarily.
- Press the (F) buttons to set the mode number (I) to 08.
- Press the (G) button and the current set setting number (II) will flash.
Use the (F) button to switch the setting number in response to the external static pressure to be used.

| External static pressure | Setting no. of mode no. 08 | Setting no. of mode no. 10 |
|--------------------------|----------------------------|----------------------------|
| 50 Pa (before shipment) | 1 | 1 |
| 100 Pa | 2 | 1 |
| 150 Pa | 3 | 1 |

- Press the MODE button (E) and mode and the setting number (I) and (II) will change to being on constantly and the contents of the setting can be confirmed.
- Press the FILTER (A) and TEST RUN (B) buttons simultaneously for at least two seconds. The function selection screen will disappear momentarily and the air conditioner OFF display will appear.
- To set the static pressure at 100, 150Pa, repeat steps (3) to (9). (Set the mode number to 10 for step (6).)

2. Other functions

- Select unit number 00 for the settings. (Settings for all indoor units)
Refer to Function table 1.
- Select unit number AL for the settings.
Refer to Function table 2.

2) For wireless remote controller [Fig. 8-5-2] (P.11)

1. Changing the external static pressure setting.

- Be sure to change the external static pressure setting depending on the duct and the grill used.

- Go to the function select mode
Press the CHECK button (F) twice continuously.
(Start this operation from the status of remote controller display turned off.)
[CHECK] is lighted and "00" blinks.
Press the TEMP button (C) once to set "50". Direct the wireless remote controller toward the receiver of the indoor unit and press the Hour button (A).

2) Setting the unit number

- Press the TEMP button (C) and (D) to set the unit number to 07. Direct the wireless remote controller toward the receiver of the indoor unit and press the Minute button (B).

3) Selecting a mode

- Enter 08 to change the external static pressure setting using the (C) and (D) buttons.

- Direct the wireless remote controller toward the receiver of the indoor unit and press the Hour button (A).

Current setting number: 1 = 1 beep (one second)
 2 = 2 beeps (one second each)
 3 = 3 beeps (one second each)

4) Selecting the setting number

- Use the (C) and (D) buttons to change the external static pressure setting to be used.

- Direct the wireless remote controller toward the sensor of the indoor unit and press the Hour button (A).

5) To set the external static pressure

- Repeat steps (3) and (4) to set the mode number to 10.

6) Complete function selection

- Direct the wireless remote controller toward the sensor of the indoor unit and press the ON/OFF button (E).

Note:

- Whenever changes are made to the function settings after installation or maintenance, be sure to record the changes with a mark in the "Setting" column of the Function table.

3) Changing the power voltage setting (Function table 1)

- Be sure to change the power voltage setting depending on the voltage used.

Function table 1

Select unit number 00

| Mode | Settings | Mode no. | Setting no. | Initial setting | Check |
|---|---|----------|-------------|-----------------|-------|
| Power failure automatic recovery*1 (AUTO RESTART FUNCTION) | Not available | 01 | 1 | ○ (*1) | |
| | Available | | 2 | | |
| Indoor temperature detecting | Indoor unit operating average | 02 | 1 | ○ | |
| | Set by indoor unit's remote controller | | 2 | | |
| | Remote controller's internal sensor | | 3 | | |
| LOSSNAY connectivity | Not Supported | 03 | 1 | ○ | |
| | Supported (indoor unit is not equipped with outdoor-air intake) | | 2 | | |
| | Supported (indoor unit is equipped with outdoor-air intake) | | 3 | | |
| Power voltage | 240V | 04 | 1 | ○ | |
| | 220V, 230V | | 2 | | |
| Auto mode | Energy saving cycle automatically enabled | 05 | 1 | ○ | |
| | Energy saving cycle automatically disabled | | 2 | | |

Function table 2

Select unit number AL [wired remote controller]/07 [wireless remote controller]

| Mode | Settings | Mode no. | Setting no. | Initial setting | Check | |
|--------------------------|--------------------------|----------------------------|----------------------------|-----------------|-------|--|
| Filter sign | 100 Hr | 07 | 1 | | | |
| | 2500 Hr | | 2 | | | |
| | No filter sign indicator | | 3 | ○ | | |
| External static pressure | External static pressure | 08 | 1 | ○ | | |
| | | | 2 | | | |
| | | | 3 | | | |
| | | Setting no. of mode no. 08 | Setting no. of mode no. 10 | 1 | ○ | |
| | | | | 2 | | |
| | | | | 3 | | |
| | | | | 1 | | |
| | | 10 | 1 | ○ | | |
| | | | 2 | | | |
| | | | 3 | | | |

*1 When the power supply returns, the air conditioner will start 3 minutes later.

Note: When the function of an indoor unit were changed by function selection after the end of installation, always indicate the contents by entering a ○ or other mark in the appropriate check filed of the tables.

9. Test run

9.1. Before test run

- ▶ After completing installation and the wiring and piping of the indoor and outdoor units, check for refrigerant leakage, looseness in the power supply or control wiring, wrong polarity, and no disconnection of one phase in the supply.
- ▶ Use a 500-volt megohmmeter to check that the resistance between the power supply terminals and ground is at least 1.0 MΩ.
- ▶ Do not carry out this test on the control wiring (low voltage circuit) terminals.

⚠ Warning:

Do not use the air conditioner if the insulation resistance is less than 1.0 MΩ. Insulation resistance

After installation or after the power source to the unit has been cut for an extended period, the insulation resistance will drop below 1 MΩ due to refrigerant accumulating in the compressor. This is not a malfunction. Perform the following procedures.

1. Remove the wires from the compressor and measure the insulation resistance of the compressor.
2. If the insulation resistance is below 1 MΩ, the compressor is faulty or the resistance dropped due to the accumulation of refrigerant in the compressor.
3. After connecting the wires to the compressor, the compressor will start to warm up after power is supplied. After supplying power for the times indicated below, measure the insulation resistance again.
 - The insulation resistance drops due to accumulation of refrigerant in the compressor. The resistance will rise above 1 MΩ after the compressor is warmed up for two to three hours.
(The time necessary to warm up the compressor varies according to atmospheric conditions and refrigerant accumulation.)
 - To operate the compressor with refrigerant accumulated in the compressor, the compressor must be warmed up at least 12 hours to prevent breakdown.
4. If the insulation resistance rises above 1 MΩ, the compressor is not faulty.

⚠ Caution:

- **The compressor will not operate unless the power supply phase connection is correct.**
- **Turn on the power at least 12 hours before starting operation.**
- Starting operation immediately after turning on the main power switch can result in severe damage to internal parts. Keep the power switch turned on during the operational season.

• For description of each check code, refer to the following table.

| ① Check code | Symptom | Remark |
|--------------|--|---|
| P1 | Intake sensor error | Each unit has two each of the following: intake sensors, liquid pipe sensors, 2-phase pipe sensors, and fan motors. When a problem occurs with one of any of the items above, an error code (P1, P2, P8, P9, or PB) will appear. When an error code appears, check both of the items. |
| P2, P9 | Pipe (Liquid or 2-phase pipe) sensor error | |
| E6, E7 | Indoor/outdoor unit communication error | |
| P4 | Drain sensor error | |
| P5 | Drain pump error | |
| PA | Forced compressor error | |
| PB | Fan motor error | |
| P6 | Freezing/Overheating safeguard operation | |
| EE | Communication error between indoor and outdoor units | |
| P8 | Pipe temperature error | |
| E4 | Remote controller signal receiving error | |
| Fb | Indoor unit control system error (memory error, etc.) | |
| E0, E3 | Remote controller transmission error | |
| E1, E2 | Remote controller control board error | |
| E9 | Indoor/outdoor unit communication error (Transmitting error) (Outdoor unit) | For details, check the LED display of the outdoor controller board. |
| UP | Compressor overcurrent interruption | |
| U3, U4 | Open/short of outdoor unit thermistors | |
| UF | Compressor overcurrent interruption (When compressor locked) | |
| U2 | Abnormal high discharging temperature/49C worked/insufficient refrigerant | |
| U1, Ud | Abnormal high pressure (63H worked)/Overheating safeguard operation | |
| U5 | Abnormal temperature of heat sink | |
| U8 | Outdoor unit fan safeguard stop | |
| U6 | Compressor overcurrent interruption/Abnormal of power module | |
| U7 | Abnormality of super heat due to low discharge temperature | |
| U9, UH | Abnormality such as overvoltage or voltage shortage and abnormal synchronous signal to main circuit/ Current sensor error | |
| Others | Other errors (Refer to the technical manual for the outdoor unit.) | |

• On wired remote controller

① Check code displayed in the LCD.

9.2. Test run

9.2.1. Using wired remote controller (option)

- ① Turn on the power at least 12 hours before the test run.
- ② Press the [TEST] button twice. ➡ "TEST RUN" liquid crystal display
- ③ Press the [Mode selection] button. ➡ Make sure that wind is blown out.
- ④ Press the [Mode selection] button and switch to the cooling (or heating) mode.
➡ Make sure that cold (or warm) wind is blown out.
- ⑤ Press the [Fan speed] button. ➡ Make sure that the wind speed is switched.
- ⑥ Check operation of the outdoor unit fan.
- ⑦ Release test run by pressing the [ON/OFF] button. ➡ Stop
- ⑧ Register a telephone number.

The telephone number of the repair shop, sales office, etc., to contact if an error occurs can be registered in the remote controller. The telephone number will be displayed when an error occurs. For registration procedures, refer to the operation manual for the indoor unit.

[Fig. 9-2-1] (P.11)

- Ⓐ ON/OFF button
- Ⓑ Test run display
- Ⓒ Indoor temperature liquid line temperature display
- Ⓓ ON/OFF lamp
- Ⓔ Power display
- Ⓕ Error code display
- Ⓖ Test run remaining time display
- Ⓗ Set temperature button
- Ⓘ Mode selection button
- Ⓚ Fan speed button
- Ⓛ TEST button

9.2.2. Wired remote controller

- ① Turn on the power.
- ② Press the [CHECK] button twice.
- ③ Set refrigerant address with [TEMP] button if system control is used.
- ④ Press the [ON/OFF] button to stop the self-check.

[Fig. 9-2-2] (P.11)

- Ⓐ CHECK button
- Ⓑ Refrigerant address
- Ⓒ TEMP. button
- Ⓓ IC: Indoor unit
OC: Outdoor unit
- Ⓔ Check code

9. Test run

9.3. Test run

9.3.1. Using wireless remote controller (option)

[Fig. 9-3] (P.11)

- ① Turn on the power to the unit at least 12 hours before the test run.
- ② Press the TEST RUN button (A) twice continuously.
(Start this operation from the status of remote controller display turned off.)
TEST RUN and current operation mode are displayed.
- ③ Press the MODE button (B) to activate COOL mode, then check whether cool air is blown out from the unit.

- ④ Press the MODE button (B) to activate HEAT mode, then check whether warm air is blown out from the unit.
- ⑤ Press the FAN button (C) and check whether fan speed changes.
- ⑥ Press the VANE button (D) and check whether the auto vane operates properly.
- ⑦ Press the ON/OFF button to stop the test run.

Note:

- Point the remote controller towards the indoor unit receiver while following steps ② to ⑦.
- It is not possible to run the in FAN, DRY or AUTO mode.

[Output pattern A] Errors detected by indoor unit

| Wireless remote controller | Wired remote controller | Symptom | Remark |
|--|-------------------------|---|--------|
| Beeper sounds/OPERATION INDICATOR lamp flashes (Number of times) | Check code | | |
| 1 | P1 | Intake sensor error | |
| 2 | P2, P9 | Pipe (Liquid or 2-phase pipe) sensor error | |
| 3 | E6, E7 | Indoor/outdoor unit communication error | |
| 4 | P4 | Drain sensor error | |
| 5 | P5 | Drain pump error | |
| 6 | P6 | Freezing/Overheating safeguard operation | |
| 7 | EE | Communication error between indoor and outdoor units | |
| 8 | P8 | Pipe temperature error | |
| 9 | E4 | Remote controller signal receiving error | |
| 10 | — | — | |
| 11 | PB | Fan motor error | |
| 12 | Fb | Indoor unit control system error (memory error, etc.) | |
| No sound | — — | No corresponding | |

[Output pattern B] Errors detected by unit other than indoor unit (outdoor unit, etc.)

| Wireless remote controller | Symptom | Remark |
|--|--|---|
| Beeper sounds/OPERATION INDICATOR lamp flashes (Number of times) | | |
| 1 | Indoor/outdoor unit communication error (Transmitting error) (Outdoor unit) | For details, check the LED display of the outdoor controller board. |
| 2 | Compressor overcurrent interruption | |
| 3 | Open/short of outdoor unit thermistors | |
| 4 | Compressor overcurrent interruption (When compressor locked) | |
| 5 | Abnormal high discharging temperature/49C worked/ insufficient refrigerant | |
| 6 | Abnormal high pressure (63H worked)/ Overheating safeguard operation | |
| 7 | Abnormal temperature of heat sink | |
| 8 | Outdoor unit fan protection stop | |
| 9 | Compressor overcurrent interruption/Abnormal of power module | |
| 10 | Abnormality of super heat due to low discharge temperature | |
| 11 | Abnormality such as overvoltage or voltage shortage and abnormal synchronous signal to main circuit/Current sensor error | |
| 12 | — | |
| 13 | — | |
| 14 | Other errors (Refer to the technical manual for the outdoor unit.) | |

*1 If the beeper does not sound again after the initial two beeps to confirm the self-check start signal was received and the OPERATION INDICATOR lamp does not come on, there are no error records.

*2 If the beeper sounds three times continuously “beep, beep, beep (0.4 + 0.4 + 0.4 sec.)” after the initial two beeps to confirm the self-check start signal was received, the specified refrigerant address is incorrect.

- On wireless remote controller
The continuous buzzer sounds from receiving section of indoor unit.
Blink of operation lamp
- On wired remote controller
Check code displayed on the LCD.
- Check that all LEDs on the two control boards on the indoor unit are lit or blinking (3 each, 6 total).

• If the unit cannot be operated properly after the above test run has been performed, refer to the following table to remove the cause.

| Symptom | | Cause |
|--|--|--|
| Wired remote controller | LED 1, 2 (PCB in outdoor unit) | |
| PLEASE WAIT | For about 2 minutes following power-on | After LED 1, 2 are lighted, LED 2 is turned off, then only LED 1 is lighted. (Correct operation) |
| PLEASE WAIT → Error code | After about 2 minutes has expired following power-on | Only LED 1 is lighted. → LED 1, 2 blink. |
| Display messages do not appear even when operation switch is turned ON (operation lamp does not light up). | | Only LED 1 is lighted. → LED 1, 2 blinks twice, LED 2 blinks once. |

9. Test run

On the wireless remote controller with conditions above, following phenomena takes place.

- No signals from the remote controller are accepted.
- OPE lamp is blinking.
- The buzzer makes a short ping sound.

Note:

Operation is not possible for about 30 seconds after cancellation of function selection. (Correct operation)

For description of each LED (LED1, 2, 3) provided on the indoor controller, refer to the following table.

| | |
|--|---|
| LED 1 (power for microcomputer) | Indicates whether control power is supplied. Make sure that this LED is always lit. |
| LED 2 (power for remote controller) | Indicates whether power is supplied to the remote controller. This LED lights only in the case of the indoor unit which is connected to the outdoor unit refrigerant address "0". |
| LED 3 (communication between indoor and outdoor units) | Indicates state of communication between the indoor and outdoor units. Make sure that this LED is always blinking. |

9.4. AUTO RESTART FUNCTION

Indoor controller board

This model is equipped with the AUTO RESTART FUNCTION.

When the indoor unit is controlled with the remote controller, the operation mode, set temperature, and the fan speed are memorized by the indoor controller board. The auto restart function sets to work the moment the power has restored after power failure, then, the unit will restart automatically.

Set the AUTO RESTART FUNCTION using the remote controller. (Mode no.01)

10. Maintenance

10.1. Gas charge

[Fig. 10-1] (P.12)

- Ⓐ Indoor unit
- Ⓑ Union
- Ⓒ Liquid pipe
- Ⓓ Gas pipe
- Ⓔ Stop valve
- Ⓕ Outdoor unit
- Ⓖ Refrigerant gas cylinder operating valve
- Ⓗ Refrigerant gas cylinder for R410A with siphon
- Ⓘ Refrigerant (liquid)
- Ⓚ Electronic scale for refrigerant charging
- Ⓛ Charge hose (for R410A)
- Ⓜ Gauge manifold valve (for R410A)
- Ⓝ Service port

1. Connect gas cylinder to the service port of stop valve (3-way).
2. Execute air purge of the pipe (or hose) coming from refrigerant gas cylinder.
3. Replenish specified amount of refrigerant, while running the air conditioner for cooling.

Note:

In case of adding refrigerant, comply with the quantity specified for the refrigerating cycle.

⚠ Caution:

- **Do not discharge the refrigerant into the atmosphere.**
Take care not to discharge refrigerant into the atmosphere during installation, reinstallation, or repairs to the refrigerant circuit.
- **For additional charging, charge the refrigerant from liquid phase of the gas cylinder.**
If the refrigerant is charged from the gas phase, composition change may occur in the refrigerant inside the cylinder and the outdoor unit. In this case, ability of the refrigerating cycle decreases or normal operation can be impossible. However, charging the liquid refrigerant all at once may cause the compressor to be locked. Thus, charge the refrigerant slowly.

To maintain the high pressure of the gas cylinder, warm the gas cylinder with warm water (under 40°C) during cold season. But never use naked fire or steam.

11. Specifications

| Model | | PEA-RP100GAA | PEA-RP125, 140GAA |
|--------------------------------|-------|---------------------|-------------------|
| Power input | kW | 0.21 | 0.49 |
| Current | A | 1.83 | 3.84 |
| Air flow rate (Hi-Lo) | 50Pa | m ³ /min | 60-48 |
| | 100Pa | | 54-43 |
| | 150Pa | | 52-41 |
| Sound level at 50Pa (Hi-Lo) | dB(A) | 42-39 | 45-42 |
| Weight | kg | 63 | 63 |

Please be sure to put the contact address/telephone number on
this manual before handing it to the customer.

MITSUBISHI ELECTRIC CORPORATION

HEAD OFFICE: TOKYO BLDG., 2-7-3, MARUNOUCHI, CHIYODA-KU, TOKYO 100-8310, JAPAN